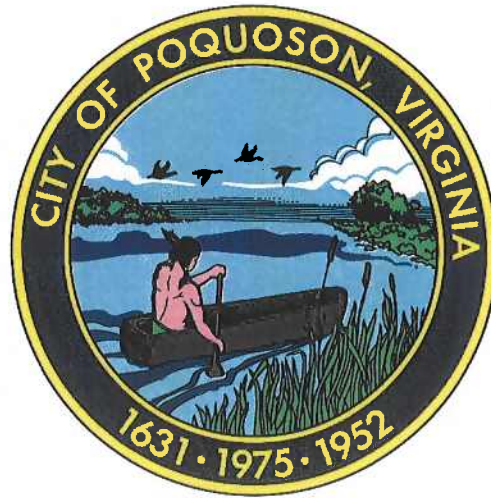


*Comprehensive Annual
Financial Report*

City of Poquoson, Virginia



Fiscal Year Ended June 30, 2006

Prepared by:

The Department of Finance

Lisa K. Dessoffy, CPA, Director



Certified Public Accountants
Specialized Services
Business Solutions

City of Poquoson, Virginia
Government Officials

City Council

Gordon C. Helsel, Jr., Mayor
Arthur V. Holloway, Jr., Vice Mayor
Herbert R. Green, Jr.
Carey L. Freeman
W. Eugene Hunt, Jr.
Frank A. Kreiger
Debra D. Bunting

City Officials

Charles W. Burgess, Jr., City Manager
Lisa K. Dessoffy, CPA, Director of Finance
Lisa K. Dessoffy, CPA, Interim Treasurer
Graham P. Wilson, Commissioner of the Revenue
D. Wayne Moore, City Attorney
Judy F. Wiggins, City Clerk

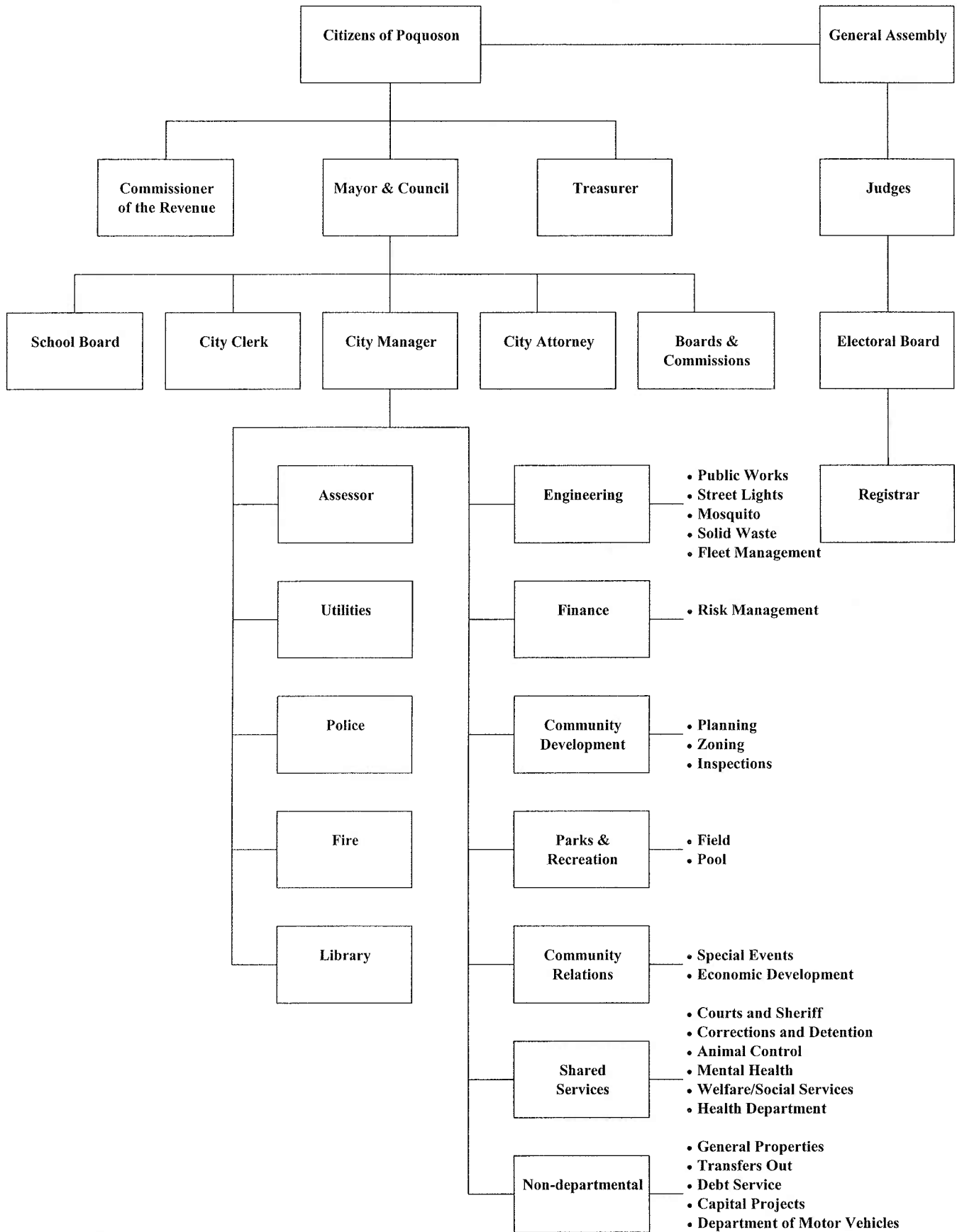
School Board

Clifford T. Bowen, Chair
Regina P. Wightman, Vice Chair
Deborah Ann Banton
John A. Costulis
Kerry Y. Knowlton
Constance B. Sledd
Larry R. Marks

School Officials

Dr. Jonathan L. Lewis, Superintendent
Dr. Marilyn F. Barr, Assistant Superintendent of Instruction
Janet A. Brown, Executive Director of Business and Finance

CITY OF POQUOSON, VIRGINIA
CITY GOVERNMENT ORGANIZATION CHART



Certificate of
Achievement
for Excellence
in Financial
Reporting

Presented to

City of Poquoson
Virginia

For its Comprehensive Annual
Financial Report
for the Fiscal Year Ended
June 30, 2005

A Certificate of Achievement for Excellence in Financial Reporting is presented by the Government Finance Officers Association of the United States and Canada to government units and public employee retirement systems whose comprehensive annual financial reports (CAFRs) achieve the highest standards in government accounting and financial reporting.



A handwritten signature in black ink, appearing to read "Ronald J. Hagan".

President

A handwritten signature in black ink, appearing to read "Jeffrey R. Emer".

Executive Director

This page left blank intentionally

City of Poquoson, Virginia
Comprehensive Annual Financial Report
Fiscal Year Ended June 30, 2006

Table of Contents

	Exhibit	Page
Introductory Section		
Government Officials		i
City Government Organization Chart.....		ii
Certificate of Achievement for Excellence in Financial Reporting.....		iii
Table of Contents		iv - v
Letter of Transmittal to City Council.....		vi - x
 Financial Section		
Report of Independent Auditors		1 - 2
Management's Discussion and Analysis		3 - 17
Basic Financial Statements:		
<i>Government-Wide Financial Statements:</i>		
Statement of Net Assets.....	A	18
Statement of Activities	B	19
<i>Governmental Funds Financial Statements:</i>		
Balance Sheet – Governmental Funds	C	20
Reconciliation of the Governmental Funds Balance Sheet to the Statement of Net Assets	C	21
Statement of Revenues, Expenditures, and Changes in Fund Balances – Governmental Funds	D	22
Reconciliation of the Revenues, Expenditures, and Changes in Fund Balances – Governmental Funds to the Statement of Activities.....	D	23
Statement of Net Assets – Proprietary Funds.....	E	24
Statement of Revenue, Expenditures, and Changes in Fund Net Assets – Proprietary Funds.....	F	25
Statement of Cash Flows – Proprietary Funds	G	26
Statement of Fiduciary Net Assets.....	H	27
Statement of Net Assets – Component Units.....	I	28
Statement of Activities – Component Units.....	J	29
Notes to the Basic Financial Statements		30 - 53
Required Supplementary Information		
Budgetary Comparison Schedule – General Fund.....	K	54 - 57
Schedules of Funding Progress and Employer Contributions – Virginia Retirement System	L	58
Notes to Required Supplementary Information.....		59
Other Supplementary Information		
Combining Balance Sheet – Component Unit – School Board	1	60
Combining Statement of Revenues, Expenditures, and Changes in Fund Balances – Component Unit – School Board	2	61
Budgetary Comparison Schedule – General Fund – School Board.....	3	62
School Board Schedule of Changes in Capital Assets by Function and Activity.....	4	63
Combining Schedule of Changes in Assets and Liabilities – Agency Funds Discretely Presented Component Unit – School Board.....	5	64

