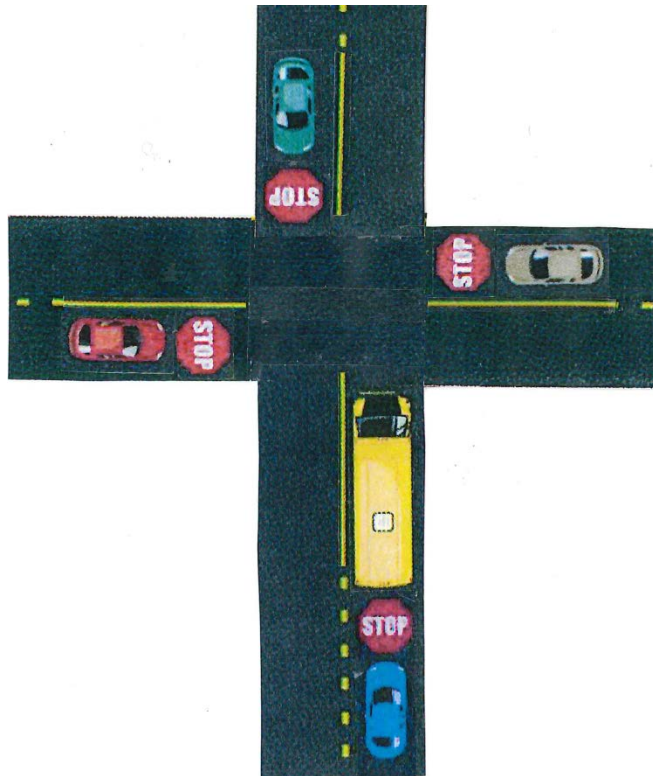


VIRGINIA MOTORIST LAWS APPLIED TO SCHOOL BUS LOADING AND UNLOADING



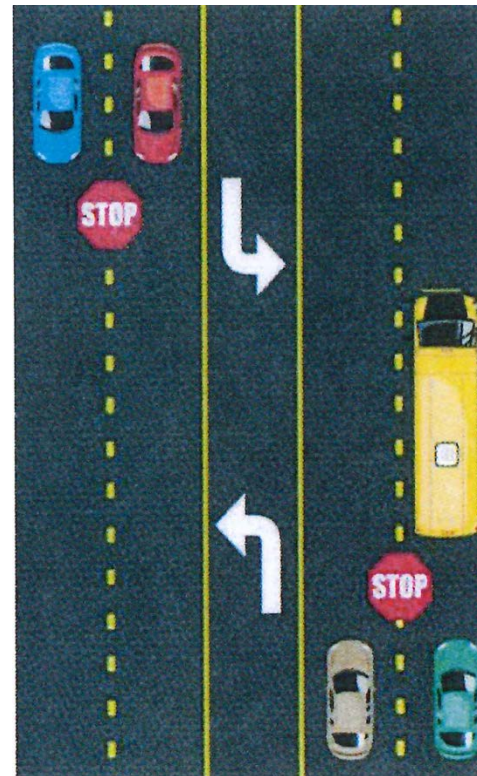
TWO LANE:

Vehicles traveling in both directions **MUST** stop



INTERSECTION: (controlled or not controlled by a traffic control device):

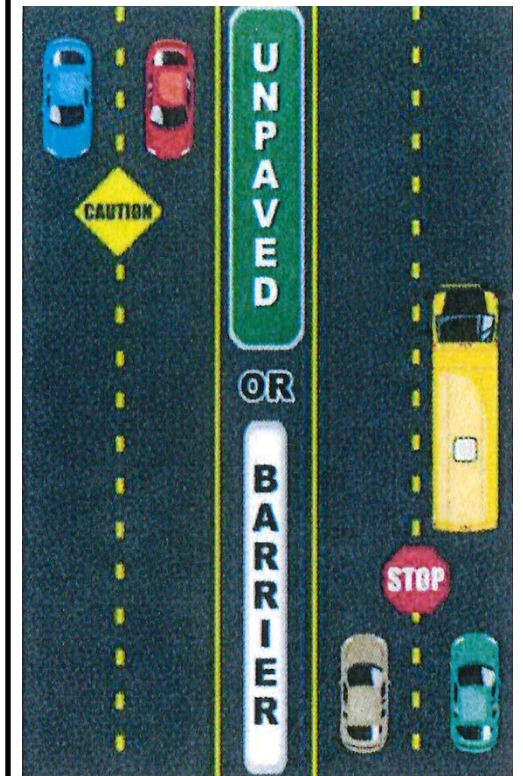
Vehicles approaching from any direction **MUST** stop



MULTI-LANE paved across:

Vehicles traveling in both directions **MUST** stop

(Wythe Creek Rd)



DIVIDED HIGHWAY:

Vehicles behind the bus **MUST** stop. Vehicles traveling in the opposite direction are not required to stop

(Magruder Blvd, Int. 64)

Virginia Code §46.2-859 A person driving a motor vehicle shall stop such vehicle when approaching, from any direction, any school bus which is stopped on any highway, private road or school driveway for the purpose of taking on or discharging children, the elderly, or mentally or physically handicapped persons, and shall remain stopped until all the persons are clear of the highway, private road or school driveway and the bus is put in motion; any person violating the foregoing is guilty of reckless driving. The driver of a vehicle, however, need not stop when approaching a school bus if the school bus is stopped on the other roadway of a divided highway, on an access road, or on a driveway when the other roadway, access road, or driveway is separated from the roadway on which he is driving by a physical barrier or an unpaved area.

Virginia Code 46.2-1090 Failure of a warning device to function on any school bus shall not relieve any person operating a motor vehicle from his duty to stop as provided in §§46.2-844 and 46.2-859